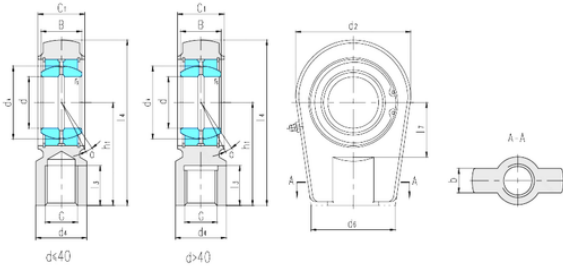




# BEARING-SINGAPORE (PTE)LTD.



## LS SIRN90ES-D plain bearings

Bearing No. SIRN90ES-D

Bore Diameter	90 mm
d	90 mm
B	60 mm
b	60 mm
d2	206 mm
d4	124 mm
d6	180 mm
dk	115 mm
h1	210 mm
l3 min.	101 mm
l4 max.	323 mm
l7 min.	90 mm
r min.	1 mm
C1	65 mm
Thread (G)	M100 × 2
Angle	5 °
Weight	23,5 Kg
Basic dynamic load rating (C)	488 kN

SIRN90ES-D Bearing 2D drawings and 3D CAD models