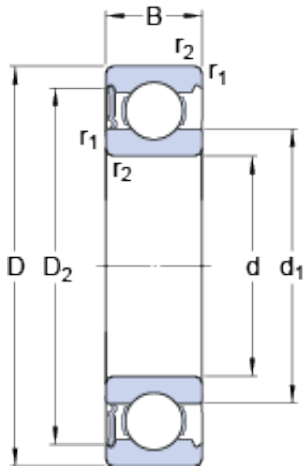




BEARING-SINGAPORE (PTE)LTD.



3 mm x 10 mm x 4 mm SKF 623-RS1 deep groove ball bearings

Bearing No. 623-RS1

623-RS1 Bearing 2D drawings and 3D CAD models

Size	10x3x4 mm
Bore Diameter	10 mm
Outer Diameter	3 mm
Width	4 mm
d	3 mm
D	10 mm
B	4 mm
d ₁	5.2 mm
D ₂	8.2 mm
r _{1,2} - min.	0.15 mm
d _a - min.	4.2 mm
d _a - max.	5.1 mm
D _a - max.	8.8 mm
r _a - max.	0.1 mm
Basic dynamic load rating - C	0.54 kN
Basic static load rating - C ₀	0.18 kN
Fatigue load limit - P _u	0.007 kN
Limiting speed	40000 r/min
Calculation factor - k _r	0.025
Calculation factor - f ₀	7.5
Size	10x3x4 mm
Bore Diameter	10 mm
Outer Diameter	3 mm
Width	4 mm



BEARING-SINGAPORE (PTE)LTD.

d	3 mm
D	10 mm
B	4 mm
d ₁	5.2 mm
D ₂	8.2 mm
r _{1,2} - min.	0.15 mm
d _a - min.	4.2 mm
d _a - max.	5.1 mm
D _a - max.	8.8 mm
r _a - max.	0.1 mm
Basic dynamic load rating - C	0.54 kN
Basic static load rating - C ₀	0.18 kN
Fatigue load limit - P _u	0.007 kN
Limiting speed	40000 r/min
Calculation factor - k _r	0.025
Calculation factor - f ₀	7.5
d ₁	5.2 mm
D ₂	8.2 mm
r _{1,2} min.	0.15 mm
d _a min.	4.2 mm
d _a max.	5.1 mm
D _a max.	8.8 mm
r _a max.	0.1 mm
Basic dynamic load rating C	0.54 kN
Basic static load rating C ₀	0.18 kN
Fatigue load limit P _u	0.007 kN
Calculation factor k _r	0.025
Calculation factor f ₀	7.5
Mass bearing	0.0015 kg